

Каталог продукции DAVAN FLOWTEK



По вопросам продаж и поддержки обращайтесь:

Алматы (7273)495-231
 Архангельск (8182)63-90-72
 Астрахань (8512)99-46-04
 Барнаул (3852)73-04-60
 Белгород (4722)40-23-64
 Брянск (4832)59-03-52
 Владивосток (423)249-28-31
 Волгоград (844)278-03-48
 Вологда (8172)26-41-59
 Воронеж (473)204-51-73
 Екатеринбург (343)384-55-89
 Иваново (4932)77-34-06
 Ижевск (3412)26-03-58
 Иркутск (395)279-98-46
 Россия (495)268-04-70

Казань (843)206-01-48
 Калининград (4012)72-03-81
 Калуга (4842)92-23-67
 Кемерово (3842)65-04-62
 Киров (8332)68-02-04
 Краснодар (861)203-40-90
 Красноярск (391)204-63-61
 Курск (4712)77-13-04
 Липецк (4742)52-20-81
 Магнитогорск (3519)55-03-13
 Москва (495)268-04-70
 Мурманск (8152)59-64-93
 Набережные Челны (8552)20-53-41
 Нижний Новгород (831)429-08-12
 Киргизия (996)312-96-26-47

Новокузнецк (3843)20-46-81
 Новосибирск (383)227-86-73
 Омск (3812)21-46-40
 Орел (4862)44-53-42
 Оренбург (3532)37-68-04
 Пенза (8412)22-31-16
 Пермь (342)205-81-47
 Ростов-на-Дону (863)308-18-15
 Рязань (4912)46-61-64
 Самара (846)206-03-16
 Санкт-Петербург (812)309-46-40
 Саратов (845)249-38-78
 Севастополь (8692)22-31-93
 Симферополь (3652)67-13-56
 Казахстан (7172)727-132

Смоленск (4812)29-41-54
 Сочи (862)225-72-31
 Ставрополь (8652)20-65-13
 Сургут (3462)77-98-35
 Тверь (4822)63-31-35
 Томск (3822)98-41-53
 Тула (4872)74-02-29
 Тюмень (3452)66-21-18
 Ульяновск (8422)24-23-59
 Уфа (347)229-48-12
 Хабаровск (4212)92-98-04
 Челябинск (351)202-03-61
 Череповец (8202)49-02-64
 Ярославль (4852)69-52-93

◀ Concentric Butterfly Valve

Technical Data

Size	DN40-DN1200
General Design	ISO 5752/ BS 5155/API 609
Mounting Pad	ISO 5211
Face to Face	API609/EN558-1 20 series, etc
Flange Drilling	DN 2501 PN10/16/ASME B16.5 CL150
Inspection and Test	API 598

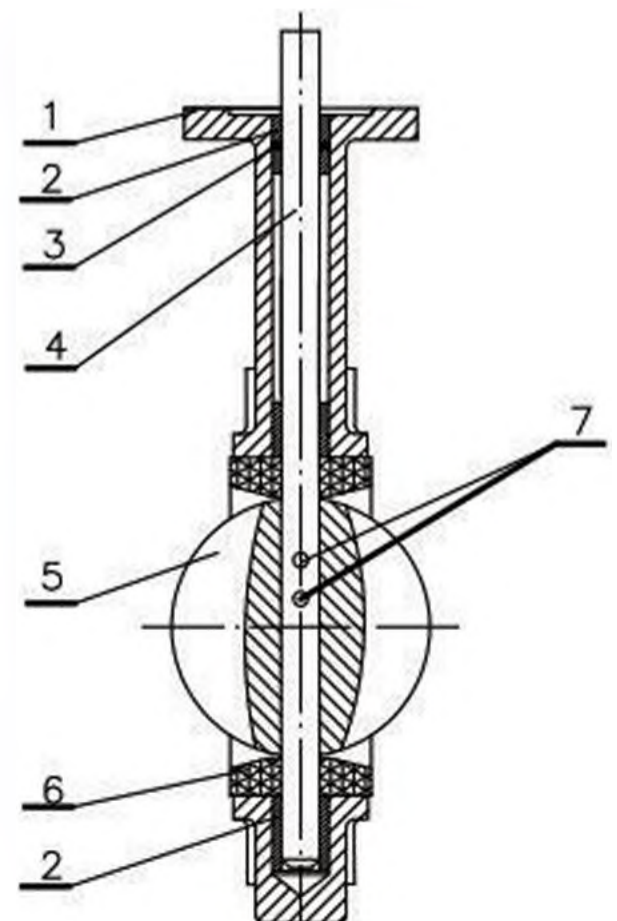


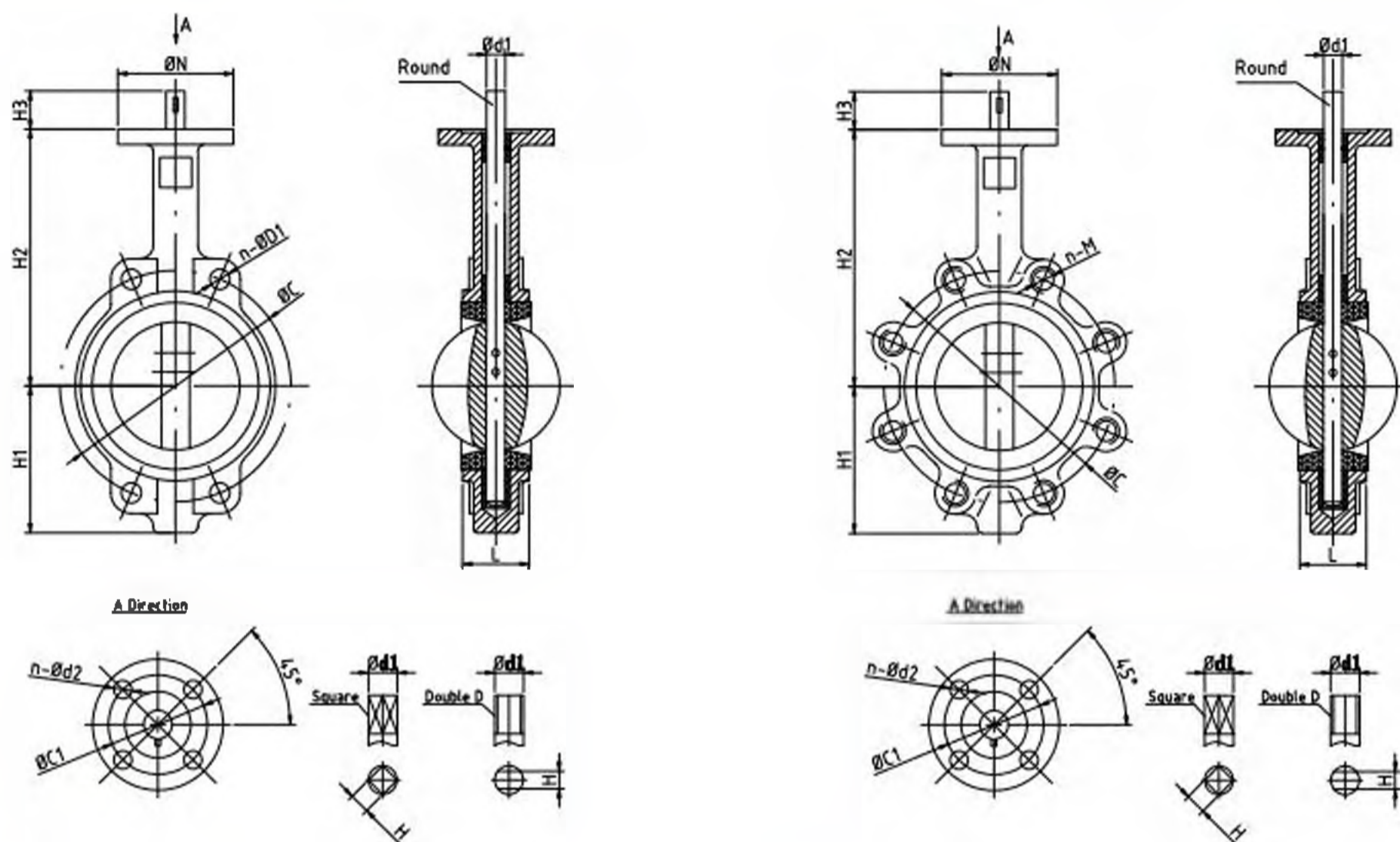
Product Features

- Water, Lug or U type flanged body style fit between FF or RF flanges
- PTFE bushing ensure the maximum shaft support and centralized alignment
- 360° polished disc assures positive on-off
- Hard-backed cartridge seat or Edge-boot seat
- The pin spine or square connection are all available
- Universal ISO5211 mounting pad

Materials of Parts

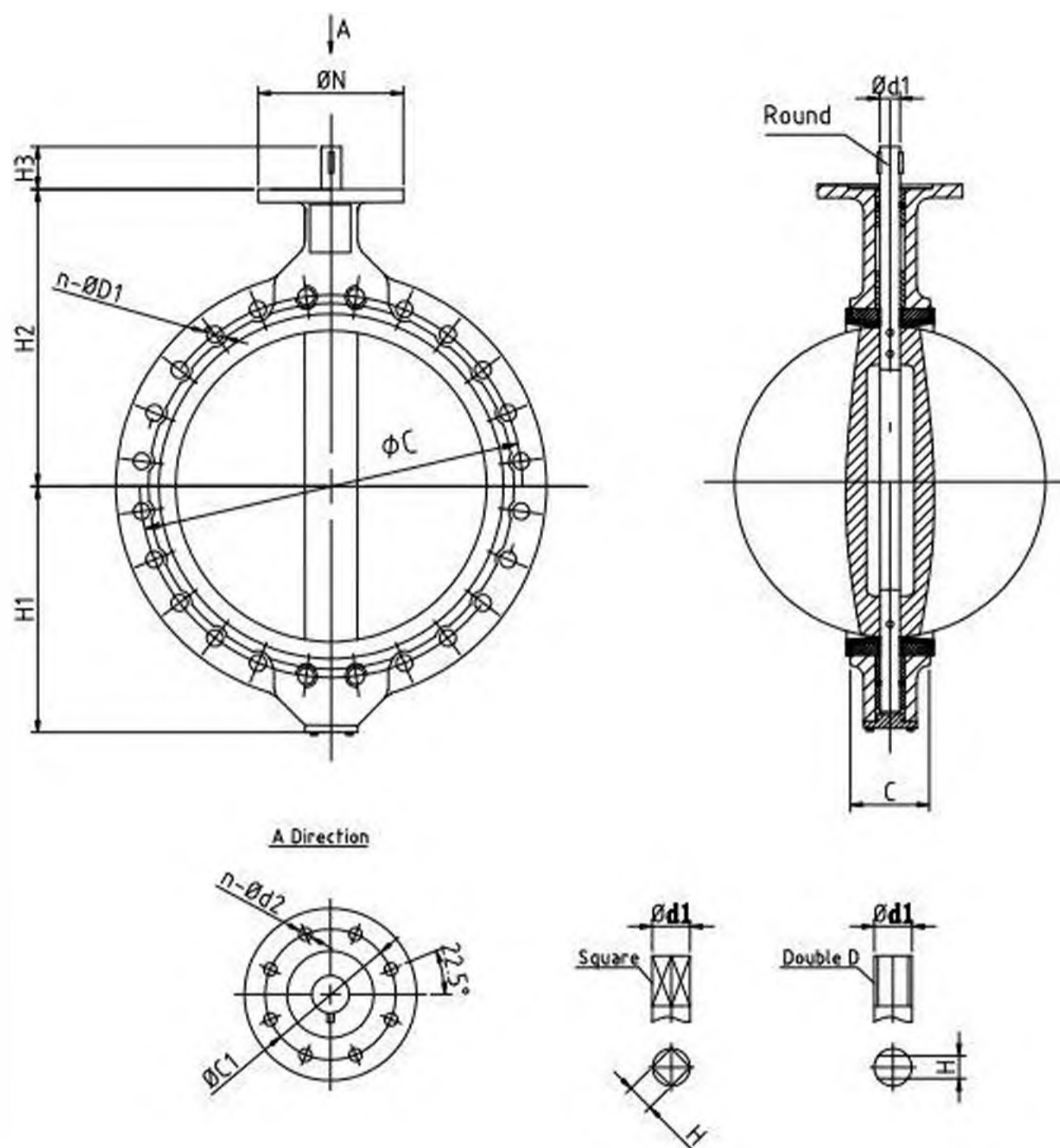
Parts	Description	Material
1	Body	Cast iron/Ductile iron/WCB
2	Bushing	PTFE/Bronze
3	O-ring	EPDM/NBR
4	Shaft	Stainless Steel
5	Disc	Stainless Steel/Al-Bronze /Ductile Iron
6	Seat	EPDM/NBR/VITON/PTFE
7	Pin	Stainless Steel





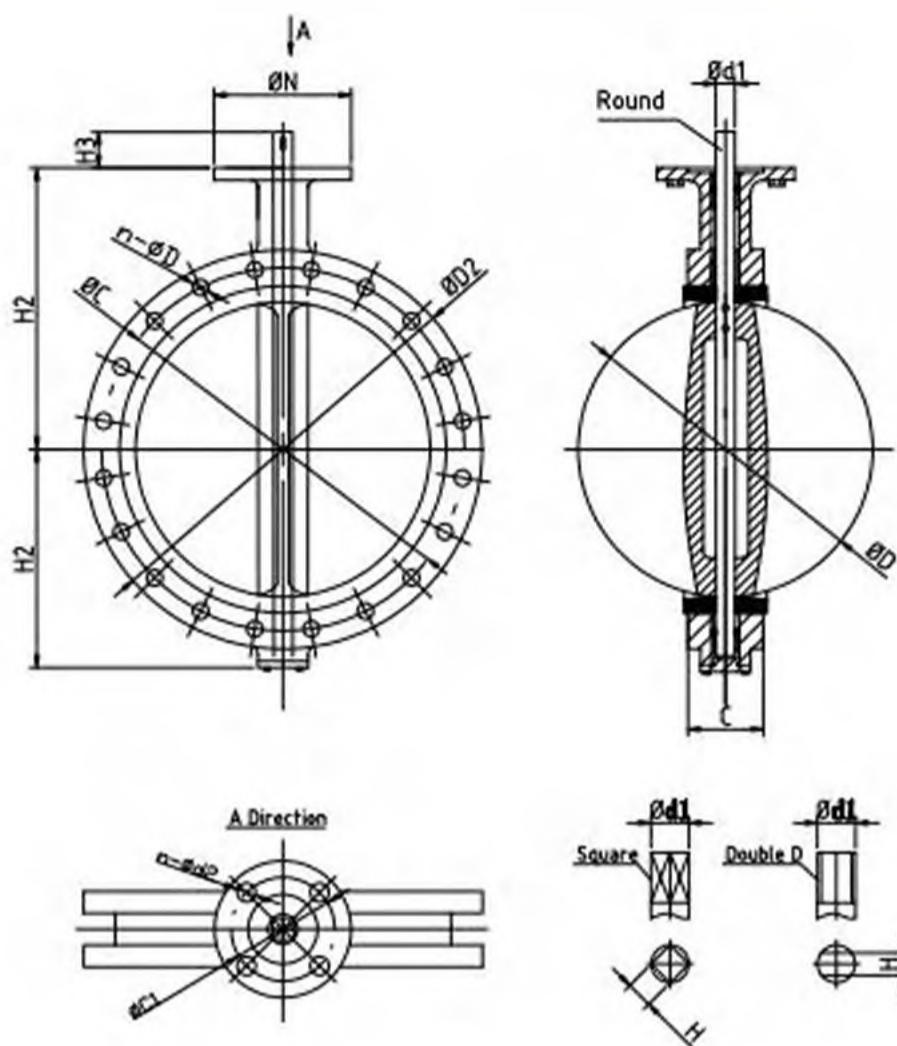
Dimensions(mm)

Size		L	H1	H2	H3	ØC		n-ØD1 (PN10)	n-ØD1 (Pn16)	n-M (PN16)	n-M (PN16)	Flange NO	ØN	ØC1	n-Ød2	Round	Square/ Double D	
DN	NPS					PN10	PN16									Ød1	Ød1	H
40	1-1/2"	33	81	161	32	110		4-19		4-M18		F05	65	50	4-7	12.6	12.1	9
50	2"	43	81	161	32	125		4-19		4-M18		F05	65	50	4-7	12.8	12.1	9
65	2-1/2"	46	89	176	32	145		4-19		4-M18		F05	65	50	4-7	12.6	12.1	9
80	3"	46	97	184	32	160		8-19		8-M18		F05	65	50	4-7	12.8	12.1	9
100	4"	52	113	203	32	180		8-19		8-M18		F07	90	70	4-10	15.77	14.1	11
125	5"	56	123	217	32	210		8-19		8-M18		F07	90	70	4-10	18.92	18.1	14
150	6"	56	149	234	32	240		8-23		8-M20		F07	90	70	4-10	18.92	18.1	14
200	8"	60	179	264	45	295		8-23	12-23	8-M20	12-M20	F10	125	102	4-12	22.1	22.1	17
250	10"	68	205	296	45	350	356	12-23	12-26	12-M20	12-M24	F10	126	102	4-12	28.45	28.2	22
300	12"	78	247	336	45	400	410	12-23	12-26	12-M20	12-M24	F10	126	102	4-12	31.6	28.2	22
350	14"	78	270	272	45	460	470	16-23	16-26	16-M20	16-M24	F10	126	102	4-12	31.6	28.2	22
400	16"	102	297	287	51	515	526	16-26	16-30	16-M24	16-M27	F14	175	140	4-18	33.15	28.2	22
450	18"	114	328	422	51	565	585	20-26	20-30	20-M24	20-M27	F14	176	140	4-18	38	36.2	27
500	20"	127	390	465	64	620	650	20-26	20-33	20-M24	20-M30	F14	176	140	4-18	41.15	36.2	27
600	24"	154	459	562	70	725	770	20-30	20-36	20-M27	20-M33	F16	210	165	4-22	50.65	48.2	36



Dimensions(mm)

Size		L	H1	H2	H3	ϕC (PN10)	ϕC (PN16)	n- $\phi D1$ (PN10)	n- $\phi D1$ (Pn16)	Flange NO	ϕN	$\phi C1$	n- $\phi d2$	Round	Square/Double D	
DN	NPS													$\phi d1$	$\phi d1$	H
700	28"	165	520	624	66	840		24- $\phi 31$	24- $\phi 37$	F25	300	254	8-18	63.35	60.2	46
750	30"	166	540	646	66	900		24- $\phi 34$	24- $\phi 37$	F25	300	254	8-18	63.35	60.2	46
800	32"	190	591	672	66	950		24- $\phi 34$	24- $\phi 40$	F25	300	254	8-18	63.35	60.2	46
900	36"	203	656	720	118	1050		28- $\phi 34$	28- $\phi 40$	F25	300	254	8-18	75	72.2	55
1000	40"	216	721	800	142	1160	1170	28- $\phi 37$	28- $\phi 43$	F25	300	254	8-18	85	72.2	55
1200	48"	254	864	864	150	1380	1390	32- $\phi 40$	32- $\phi 49$	F30	350	298	8-22	105	/	/



Dimensions(mm)

Size		L	H1	H2	H3	DIN2501 PN16		Flange NO	ϕN	$\phi C1$	n- $\phi d2$	Round		Square/Double D	
DN	NPS					ϕC	n- $\phi D1$					$\phi d1$	$\phi d1$	H	
40	1-1/2"	33	81	161	32	110	4-19	F05	65	50	4-7	12.6	12.1	9	
50	2"	43	81	161	32	125	4-19	F05	65	50	4-7	12.6	12.1	9	
65	2-1/2"	46	89	175	32	145	4-19	F05	65	50	4-7	12.6	12.1	9	
80	3"	46	97	184	32	160	8-19	F05	65	50	4-7	12.6	12.1	9	
100	4"	52	113	203	32	180	8-19	F07	90	70	4-10	15.77	12.1	11	
125	5"	56	123	217	32	210	8-19	F07	90	70	4-10	18.92	14.1	14	
150	6"	56	149	234	32	240	8-23	F07	90	70	4-10	18.92	18.1	14	
200	8"	60	179	264	45	295	12-23	F10	125	102	4-12	22.1	18.1	17	
250	10"	98	205	295	45	355	12-26	F10	125	102	4-12	28.45	28.2	22	
300	12"	78	247	336	45	410	12-26	F10	125	102	4-12	31.6	28.2	22	
350	14"	78	270	372	45	470	12-26	F10	125	102	4-12	31.6	28.2	22	
400	16"	102	297	387	51	525	16-30	F14	175	140	4-18	33.15	28.2	22	
450	18"	114	328	422	51	585	20-30	F14	175	140	4-18	38	36.2	27	
500	20"	127	390	465	64	650	20-33	F14	175	140	4-18	41.15	36.2	27	
600	24"	154	459	562	70	770	20-36	F16	210	165	4-22	50.65	48.2	36	
Size		L	H1	H2	H3	DIN2501 PN16		Flange NO	ϕN	$\phi C1$	n- $\phi d2$	Round		Square/Double D	
DN	NPS					ϕC	n- $\phi D1$					$\phi d1$	$\phi d1$	H	
700	28"	165	520	624	66	840	24- $\phi 31$	F25	300	254	8-18	63.35	60.2	46	
750	30"	166	540	646	66	900	24- $\phi 34$	F25	300	254	8-18	63.35	60.2	46	
800	32"	190	591	672	66	950	24- $\phi 34$	F25	300	254	8-18	63.35	60.2	46	
900	36"	203	656	720	118	1050	28- $\phi 34$	F25	300	254	8-18	75	72.2	55	
1000	40"	216	721	800	142	1160	28- $\phi 37$	F25	300	254	8-18	85	72.2	55	
1200	48"	254	864	940	150	1380	32- $\phi 40$	F30	350	298	8-22	105	/	/	

◀ Double Flanged Butterfly valve

Technical Data

Size	DN50-DN1200
General Design	ISO 5752/BS 5155/EN 1092
Mounting Pad	ISO 5211
Face to Face	BS 5155/EN 558-1 13 series, etc
Flange Drilling	DN 2501 PN10/16/ASME B16.5 CL150
Inspection and Test	API598



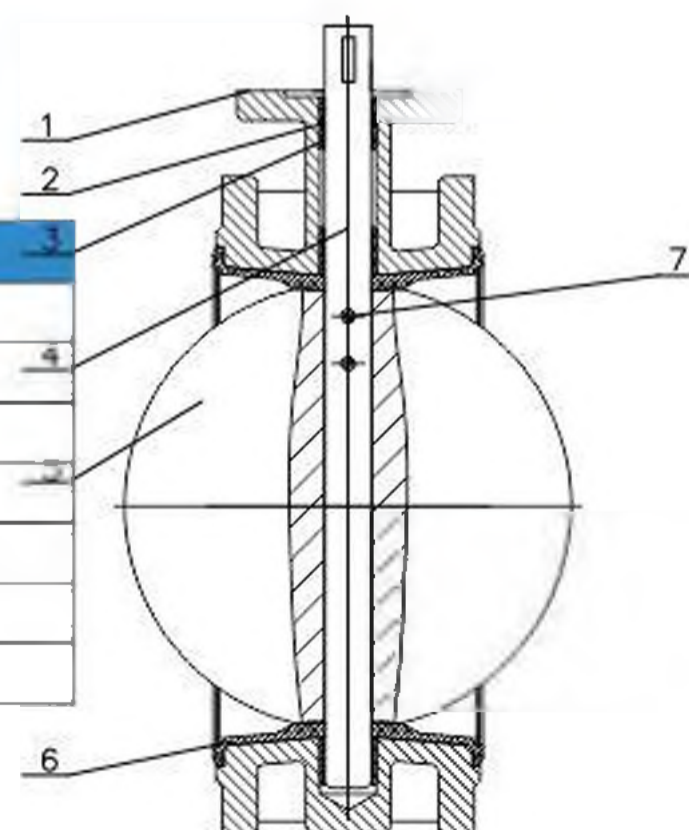
Product Features

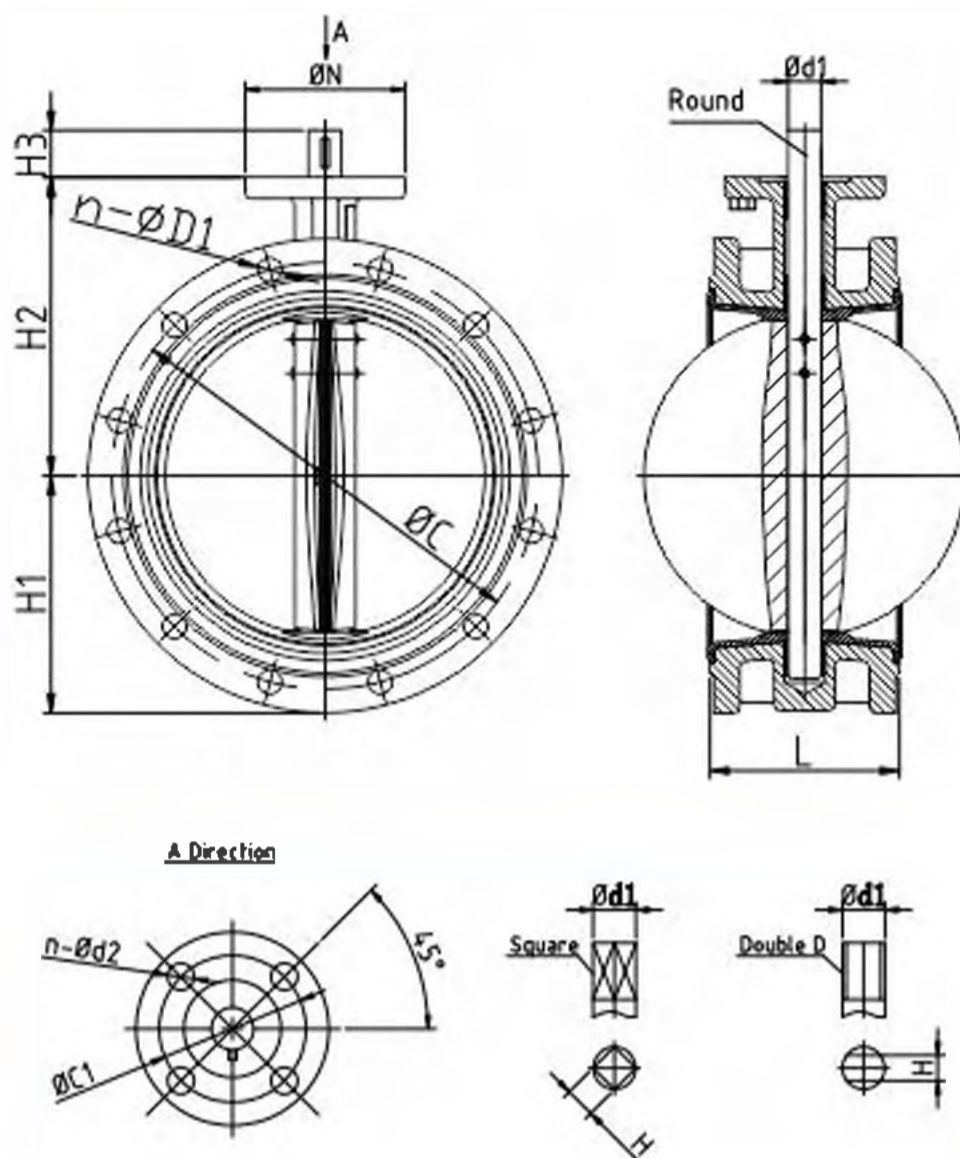
- Double flanged style fits between FF or RF flanges
- High strength body and large safety factor ensure the body can resist high pipe pressure
- Overall vulcanization liner with good performance of resisting tearing apart and deformation
- Pin connection one piece shaft with the features of counter bending and simple reliable structure
- Universal ISO5211 mounting pad



Materials of Parts

Parts	Description	Material
1	Body	Cast Iron/Ductile Iron
2	O-ring	EPDM/NBR
3	Bushing	PTFE/Bronze
4	Shaft	Stainless Steel
5	Disc	Stainless Steel/Ductile Iron
6	Seat	EPDM/NBR
7	Pin	Stainless Steel





Size		L	H1	H2	H3	DIN2501 PN16		Flange No	ϕN	$\phi C1$	$n-\phi d2$	Round	Square/Double D	
DN	NPS					$\phi d1$	$\phi d1$					H		
50	2"	108	83	126	32	125	4-19	F05	65	50	4-7	12.6	12.1	9
65	2-1/2"	112	93	132	32	145	4-19	F05	65	50	4-7	12.6	12.1	9
80	3"	114	100	146	32	160	8-19	F05	65	50	4-7	12.6	12.1	9
100	4"	127	114	155	32	180	8-19	F07	90	70	4-10	15.77	12.1	11
125	5"	140	125	170	32	210	8-19	F07	90	70	4-10	18.92	14.1	14
150	6"	140	143	192	32	240	8-23	F07	90	70	4-10	18.92	18.1	14
200	8"	152	170	226	45	295	12-23	F10	125	102	4-12	22.1	18.1	19
250	10"	165	198	265	45	355	12-26	F10	125	102	4-12	28.45	28.2	22
300	12"	178	223	297	45	410	12-26	F10	125	102	4-12	31.6	28.2	22
350	14"	190	270	338	45	470	16-26	F10	125	102	4-12	31.6	28.2	22
400	16"	216	300	350	51	525	16-30	F14	175	140	4-18	33.16	28.2	22
450	18"	222	340	375	51	585	20-30	F14	175	140	4-18	38	36.2	27
500	20"	229	355	418	64	650	20-33	F14	175	140	4-18	41.15	36.2	27
600	24"	287	410	490	70	770	20-36	F16	210	165	4-22	50.65	48.2	36
Size		L	H1	H2	H3	DIN2501 PN10		Flange No	ϕN	$\phi C1$	$n-\phi d2$	Round	Square/Double D	
DN	NPS					$\phi d1$	$\phi d1$					H		
700	28"	292	478	550	66	840	24- $\phi 31$	F25	300	254	8-18	55	60.2	46
800	32"	318	529	610	66	950	24- $\phi 34$	F25	300	254	8-18	55	60.2	46
900	36"	330	584	660	118	1050	28- $\phi 34$	F25	300	254	8-18	75	72.2	55
1000	40"	410	657	718	142	1160	28- $\phi 37$	F25	350	298	8-18	85	72.2	55
1200	48"	470	799	860	150	1380	32- $\phi 40$	F30	350	298	8-22	105	98.2	75

↔ Double Eccentric Butterfly valve

Technical Data

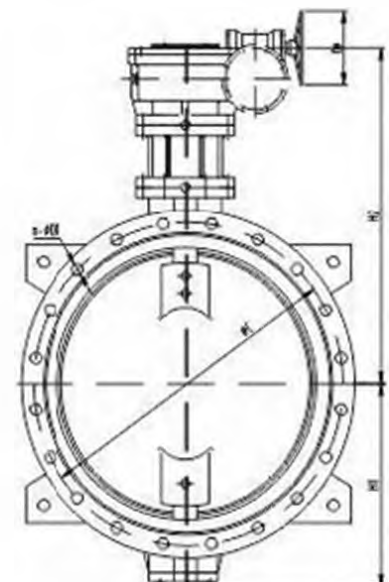
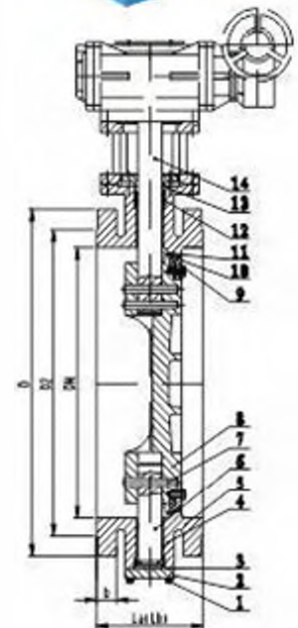
Size	DN100-DN2000
General Design	EN593
Mounting Pad	ISO 5211
Face to Face	EN 558-1 13/14 series, etc
Flange Drilling	DN 2501 PN10/16/ASME B16.5 CL150
Inspection and Test	EN 12266/DN 3230 Part 4

Product Features

- Double eccentric design disc may reduce friction of the sealing ring and provide valve a long service life
- Rubber and graphite compounds disc ring can meet different application demands
- Overall weld body sealing
- Two pieces stem design, taper pin connection between disc and shaft, which can ensure positive vibration proof
- Universal ISO5211 mounting pad

Materials of Parts

Parts	Description	Material
1	Bolt	Stainless Steel
2	End Cover	Ductile iron
3	O-ring	EPDM
4	Bushing	Bronze
5	Body	Ductile iron
6	Shaft	Stainless Steel
7	Disc Pin	Stainless Steel
8	Disc	Ductile iron
9	Retaining Ring	Ductile iron/WCB/SS
10	Rubber Sealing	EPDM
11	Body Sealing	Stainless Steel
12	Stuffing	EPDM
13	Stuffing Box	Gunmetal
14	Shaft	Stainless Steel



Dimensions(mm)

Size		La	Lb	H1	H2	DIN2501 PN16					D0
DN	NPS					D	∅C	n-∅D1	D2	b	
100	4"	127	190	138	220	220	180	8-19	158	19	180
125	5"	140	200	155	270	250	210	8-19	184	19	180
150	6"	140	210	173	287	285	240	8-23	212	19	240
200	8"	152	230	225	315	340	295	12-23	268	20	240
250	10"	165	250	248	363	405	355	12-28	320	22	300
300	12"	178	270	283	438	460	410	12-28	370	24.5	300
350	14"	190	290	313	468	520	470	16-28	430	26.5	300
400	16"	216	310	343	508	580	525	16-31	482	28	300
450	18"	222	330	368	533	640	585	20-31	548	30	300
500	20"	229	350	395	560	715	650	20-34	609	32	400
600	24"	267	390	460	635	840	770	20-37	720	36	400
700	28"	292	430	518	693	910	840	24-37	794	41	400
800	32"	318	470	588	753	1025	950	24-40	901	45	400
900	36"	330	510	653	803	1125	1050	28-40	1001	47	450
1000	40"	410	550	727	875	1255	1170	28-43	1112	50	450
1200	48"	470	630	808	1012	1485	1390	32-49	1328	55	450
1400	56"	530	710	1031	1250	1685	1590	36-49	1530	60	500
1600	64"	600	790	1170	1375	1930	1820	40-56	1750	65	500
1800	72"	670	870	1270	1488	2130	2020	44-56	1950	70	600
2000	80"	760	950	1360	1590	2345	2230	48-62	2150	72	600

Other Types of Butterfly Valves



Grooved Butterfly Valve



Two Shaft Butterfly Valve



High Performance Butterfly Valve



PTFE Covered Butterfly Valve

Wafer Type Dual Plate Check Valve

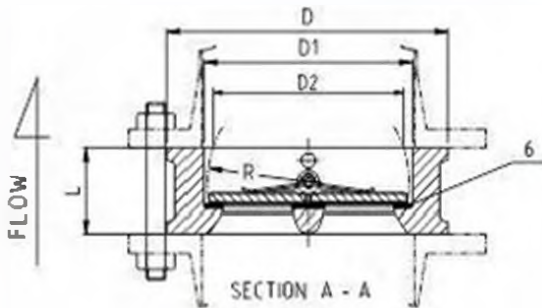
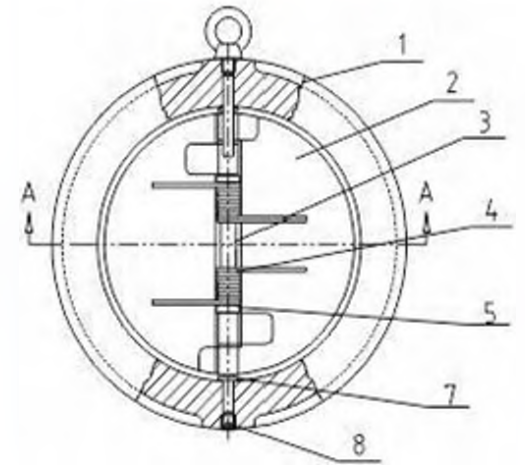
Technical Data

Size	DN40-DN800
Working Pressure	PN10/16
Face to Face	EN558-1 16series
Flange Drilling	ANSI B16.1 Class125, EN1092-2 PN10/16
Inspection and Test	API 598



Product Features

- Wafer body style fits between FF or RF flanges
- Upper and lower PTFE thrust washers
- Resilient Buna-N or EPDM seat
- Torsion springs assist valve closure, preventing flow reversal
- Thrust Washer reduce friction and wear of valve plate hinges



Dimensions(mm)

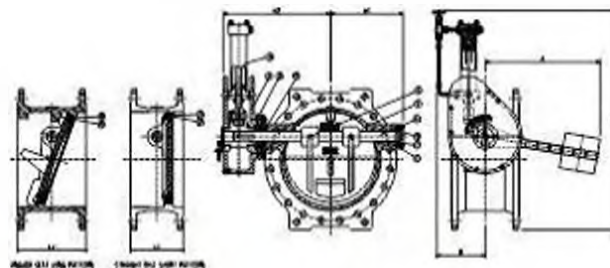
Size		L	D		D1	D2	R
DN	NPS		PN10	PN16			
40	1-1/2"	43	92	92	57	/	25
50	2"	43	107	107	65	40	27
65	2-1/2"	46	127	127	80	60	35
80	3"	64	142	142	94	70	42
100	4"	64	162	162	117	88	50
125	5"	70	192	192	145	115	64
150	6"	76	218	218	171	134	77
200	8"	89	273	273	224	182	102.6
250	10"	114	328	328	265	220	125
300	12"	114	378	378	310	260	146
350	14"	127	438	444	360	298	170
400	16"	140	489	489	410	350	195
450	18"	152	539	555	450	285	215
500	20"	152	594	617	505	438	238
600	24"	178	695	734	624.5	538	292
700	28"	229	810	804	720	662	345
800	32"	241	917	911	825	762	

Materials of Parts

Parts	Description	Material
1	Body	Cast Iron/Ductile Iron/WCB
2	Disc	Stainless Steel/Ductile Iron
3	Shaft	Stainless Steel
4	Spring	Stainless Steel
5	Washer	PTFE
6	Seat	EPDM/NBR
7	Gasket	PTFE
8	Hex Nut	Carbon Steel



↔ Tilting Disc Check Valve



Nominal Diameter	DN200-1600
Nominal Pressure	PN10&16&25
Design Standard	En12334
FTF Dimension	BS EN558-1 S SERIES 13/14
Flange Connection	ASME B16.5 CL150/ASME B16.47/ EN1092/AWWA C207/ISO 7005
Inspection and Test	API598/ISO 5208/EN12266

Structure and Feature:

1. OEM Factory: Professional manufacturer, clients from whole world.
2. High Quality, Competitive Price: Custom is accepted.
3. Complete Service: Long service Life, Fast delivery, Multilingual services.
4. Certificates: ISO9001, CE, NSF, TS, WRAS.

Material List:

No	Item	Material
1	End Cap	Carbon Steel/Stainless Steel
2	Bear Bushing	Stainless Steel + PTFE
3	Body	Ductile Iron/Carbon Steel/Stainless Steel
4	Shaft	Stainless Steel
5	Disc	Ductile Iron/Carbon Steel/Stainless Steel
6	Shaft Pin	Stainless Steel
7	O-Ring	EPDM/NBR/PTFE
8	Packing Gland	Carbon Steel
9	Yoke	Carbon Steel
10	Cylinder	Carbon Steel
11	Retaining Ring	Stainless Steel
12	Disc Sealing Ring	Laminated Sealing Ring(SS+Graphite,Asbestos Sheet OR PTFE)/EPDM/PTFE/NBR

Connection Dimension

DN(mm)	Face to Face Dim.(mm)		Outside Dimension(mm)					Approx. Wt. (Kg)
	L1	L2	H1	H2	H	A	B	
200	152	230	211	438	781	200	320	140
250	165	250	240	480	781	200	320	165
300	178	270	277	511	847	211	324	180
350	190	290	300	575	875	211	324	190
400	216	310	330	650	1100	236	420	219
450	222	330	350	675	1135	236	420	276
500	229	350	370	700	1172	236	420	368
600	267	390	475	835	1340	263	467	532
700	292	430	510	880	1403	263	467	956
800	318	470	570	935	1490	263	467	1240
900	330	510	615	1005	1644	295	607	1530
1000	410	550	660	1070	1700	295	607	2104
1200	470	630	770	1180	1820	295	607	2890
1400	530	710	940	1380	1980	330	720	3356
1600	600	790	1080	1520	2140	330	720	4400

Swing Check Valve

Technical Data

Size	DN40-DN600
Face to Face	DN 3202 F6
Flange Drilling	EN 1092-2 PN16
Inspection and Test	ISO 5208

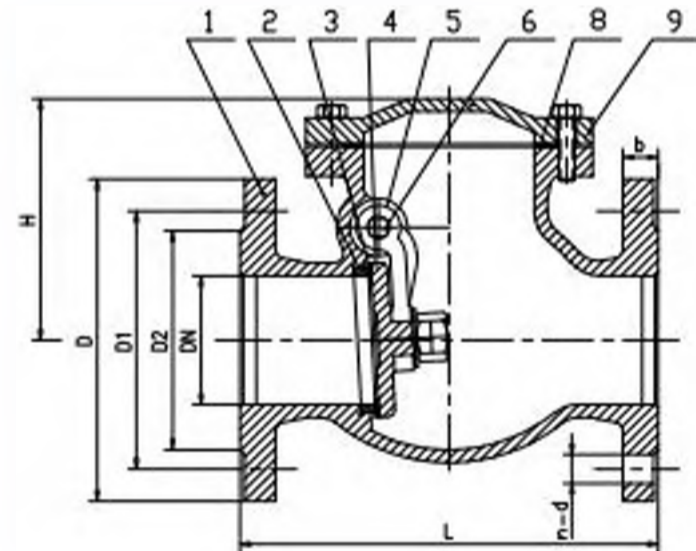


Product Features

- Full port
- Bolted cover
- Suitable for both horizontal and vertical installation

Materials of Parts

Parts	Description	Material
1	Body	GG25/GGG50
2	Seat Ring	Brass
3	Disc Ring	Brass/EPDM
4	Disc	GG25/GGG50
5	Hanger	GGG50
6	Hanger Pin	Stainless Steel
7	Cover Gasket	Graphite with Soft Steel
8	Cover	GG25/GGG50



Dimensions(mm)

Size(DN)	L	D	D1	D2	b	n-d	H	W.T(kg)
40	180	150	110	84	18	4-19	110	9
50	200	165	125	99	20	4-19	130	13.4
65	240	185	145	118	20	4-19	140	17.7
80	260	200	160	132	22	8-19	150	20.8
100	300	220	180	156	24	8-19	160	29.3
125	350	250	210	184	26	8-19	190	47
150	400	285	240	211	26	8-23	210	67
200	500	340	295	266	30	12-23	250	118.7
250	600	405	355	319	32	12-28	310	171.9
300	700	460	410	370	32	12-28	340	232.5
350	800	520	470	429	36	16-28	450	330
400	900	580	525	480	38	16-31	520	460
450	1000	640	585	548	40	20-31	550	580
500	1100	715	650	609	42	20-34	590	700
600	1300	840	770	720	48	20-37	680	780

↔ Lift Check Valve

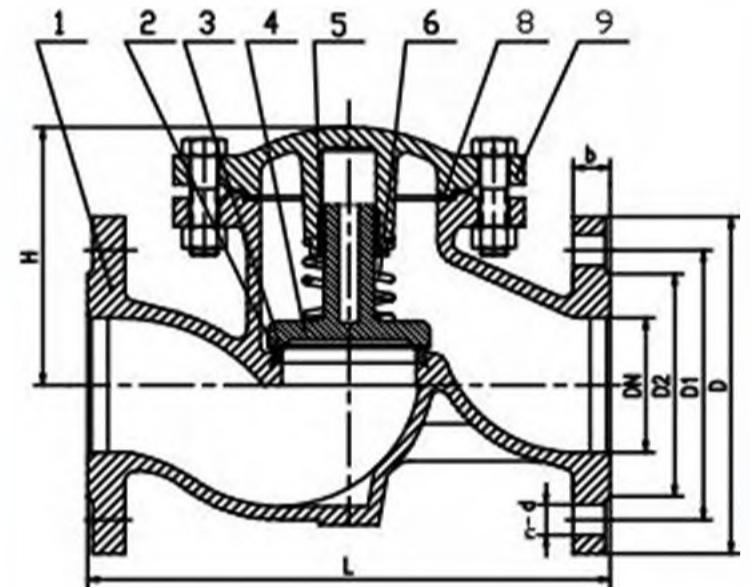
Technical Data

Size	DN15–DN300
Face to Face	DIN3202 F1
Flange Drilling	EN1092-2 PN16
Inspection and Test	ISO 5208



Materials of Parts

Parts	Description	Material
1	Body	GG25
2	Seat Ring	Stainless Steel
3	Disc Ring	Brass/Stainless Steel
4	Disc	GG25/Carbon steel
5	Guide	Brass
6	Spring	Stainless Steel
7	Cover Gasket	Graphite with Soft Steel
8	Cover	GG25



Dimensions(mm)

Size(DN)	L	D	D1	D2	b	n-d	H
15	130	95	65	45	14	4-14	73
20	150	105	75	58	16	4-14	83
25	160	115	85	68	16	4-14	85
32	180	140	100	78	18	4-18	92
40	200	150	110	88	18	4-18	97
50	230	165	125	102	20	4-18	102
65	290	185	145	122	20	4-18	121
80	310	200	160	138	22	8-18	149
100	350	220	180	158	24	8-18	162
125	400	250	210	188	26	8-18	183
150	480	285	240	212	26	8-22	214
200	600	340	295	268	30	12-22	274
250	730	405	355	320	32	12-26	310
300	850	460	410	378	32	12-26	357

Non-rising Stem Resilient Seated Gate Valve

Technical Data

Size	DN40-DN800
General Design	DIN 3352
Face to Face	DIN 3202 F4
Flange Drilling	EN 1092-2 PN16
Inspection and Test	ISO 5208

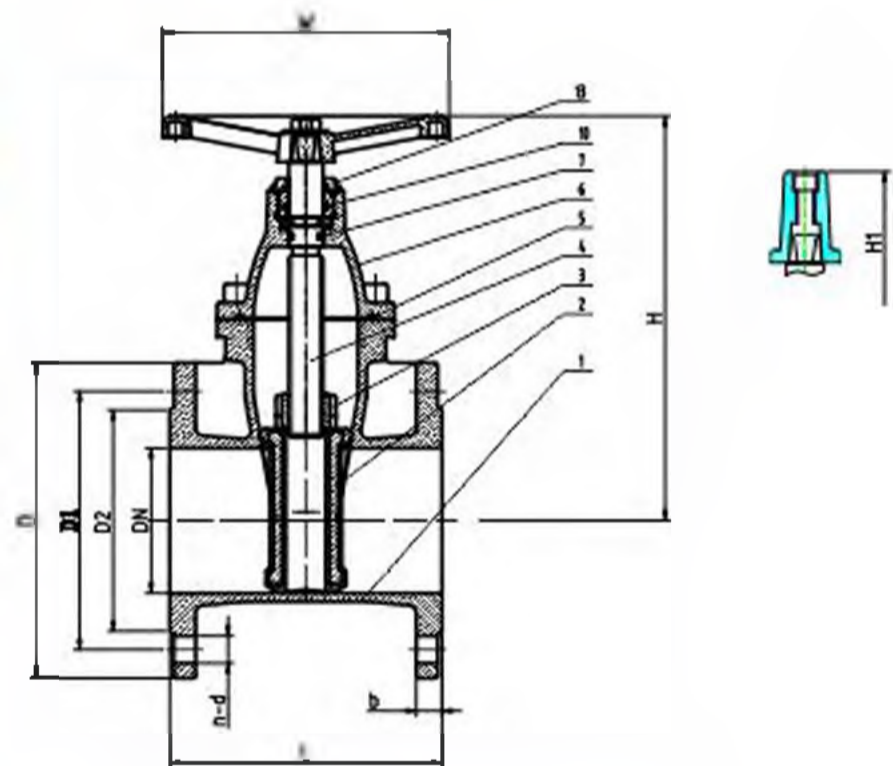
Product Features

- Replaceable O-ring
- Low torque operation
- Rubber encapsulated wedge
- Clockwise closing direction
- Fusion bonded epoxy coatde inside and outside



Materials of Parts

Parts	Description	Material
1	Body	GGG50
2	Wedge	GGG50+ EPDM/NBR
3	Wedge Nut	Brass
4	Stem	Stainless Steel
5	Bonnet Gasket	EPDM/NBR
6	Bonnet	GGG50
7	Back Sealing O-ring	EPDM/NBR
10	O-ring	EPDM/NBR
13	Stuffing Nut	Brass



Optional Extras

- Stem cap
- Position Indicator
- Extension spindle/T key

Dimensions(mm)

Size(DN)	L	H	H1	W	D	D1	D2	b	n-d
40	140	205	265	160	150	110	84	19	4-19
50	150	218	251	160	165	125	99	19	4-19
65	170	252	312	200	185	145	118	19	4-19
80	180	290	350	200	200	160	132	19	8-19
100	190	320	380	200	220	180	156	19	8-19
125	200	385	465	250	250	210	184	19	8-19
150	210	422	502	250	285	240	211	19	8-23
200	230	510	590	320	340	295	266	20	12-23
250	250	618	698	370	405	355	319	22	12-28
300	270	700	780	370	460	410	370	24.5	12-28
350	290	760	840	450	520	470	429	26.5	16-28
400	310	810	890	450	580	525	480	28	16-31
450	330	860	940	640	640	585	548	30	20-31
500	350	892	972	640	715	650	609	31.5	20-34
600	390	950	1030	640	840	770	720	36	20-37

Non-rising Stem Metal Seated Gate Valve

Technical Data

Size	DN40-DN600
General Design	DIN 3352
Face to Face	DIN 3202 F4
Flange Drilling	EN 1092-2 PN10
Inspection and Test	ISO 5208

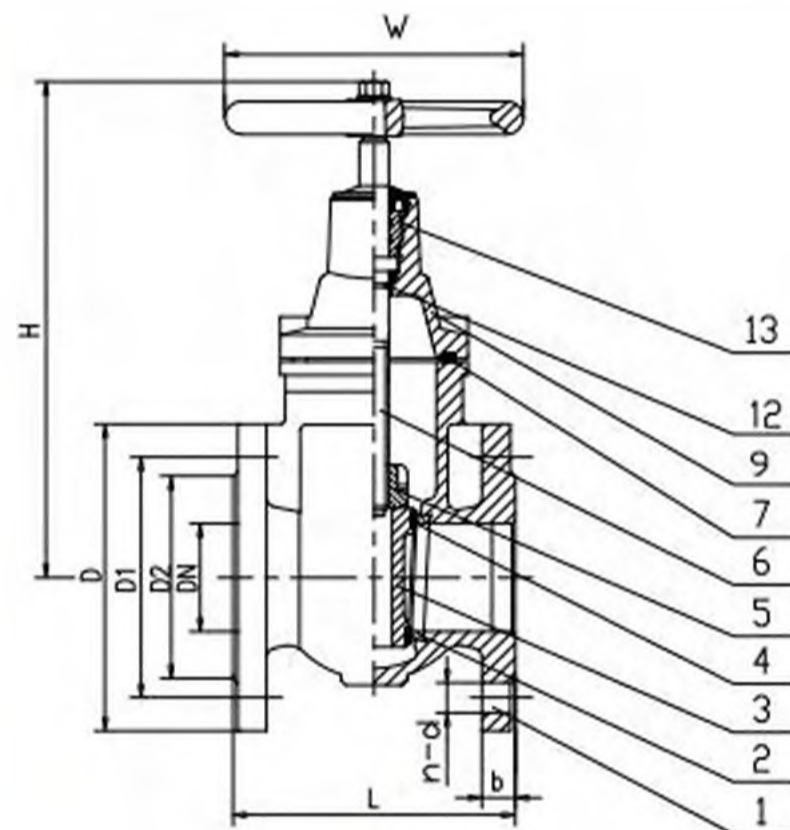


Product Features

- Bolt bonnet
- Solid wedge disc
- Replaceable O-ring
- Clockwise closing direction
- Seat rings are pressed into wedge and body

Materials of Parts

Parts	Description	Material
1	Body	EN-GJL-250
2	Seat Ring	Brass
3	Wedge	EN-GJL-250
4	Wedge Ring	Brass
5	Wedge Nut	Brass
6	Stem	Stainless Steel
7	Bonnet Gasket	Graphite
9	Bonnet	EN-GJL-250
12	Stem Sealing	EPDM O-ring
13	Gland Flange	EN-GJL-250



Optional Extras

- Position indicator

Dimensions(mm)

Size(DN)	L	D	D1	D2	b	n-d	H	W
40	140	150	110	84	18	4-19	230	130
50	150	165	125	99	20	4-19	250	130
65	170	185	145	118	20	4-19	280	130
80	180	200	160	132	22	8-19	310	150
100	190	220	180	156	24	8-19	349	185
125	200	250	210	184	26	8-19	395	185
150	210	285	240	211	26	8-23	456	195
200	230	340	295	266	26	8-23	537	225
250	250	395	350	319	28	12-23	659	245
300	270	445	400	370	28	12-23	718	285
350	290	505	460	429	30	16-23	870	400
400	310	565	515	480	32	16-28	941	400
450	330	615	565	530	32	20-28	1204	640
500	350	670	620	562	34	20-28	1295	640
600	390	780	725	682	36	20-31	1478	640

◀ Rising Stem Solid Wedge Gate Valve

Technical Data

Size	DN40-DN600
General Design	DIN 3352
Face to Face	DIN 3202 F4
Flange Drilling	EN 1092-2 PN10
Inspection and Test	ISO 5208

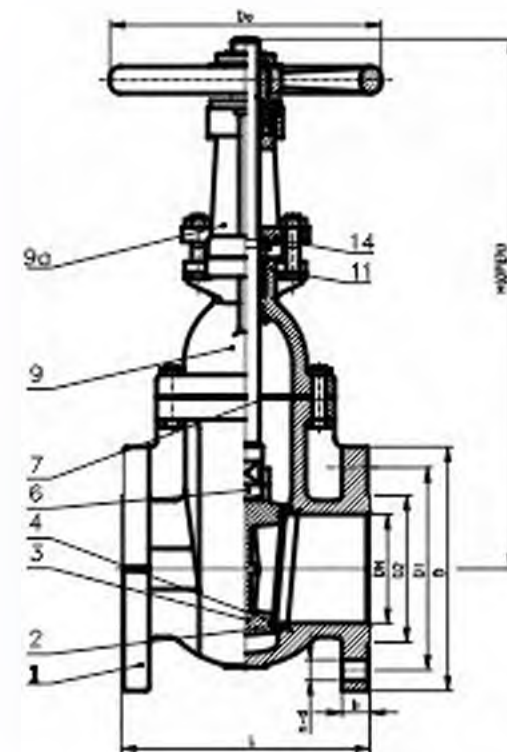


Product Features

- Bolt bonnet
- Solid wedge disc
- Outside screw and yoke
- Clockwise closing direction
- Graphite packing
- Seat rings are pressed into wedge and body

Materials of Parts

Parts	Description	Material
1	Body	EN-GJL-250
2	Seat Ring	Brass
3	Wedge	EN-GJL-250
4	Wedge Ring	Brass
5	Stem	Stainless Steel
6	Bonnet Gasket	Graphite
9	Bonnet	EN-GJL-250
9a	Yoke	EN-GJL-250
11	Packing	Graphite
14	Gland Follower	EN-GJL-500-7



Dimensions(mm)

Size(DN)	L	D	D1	D2	b	n-d	H(open)	W
40	140	150	110	84	18	4-19	340	180
50	150	165	125	99	20	4-19	354	180
65	170	185	145	118	20	4-19	390	180
80	180	200	160	132	22	8-19	435	200
100	190	220	180	156	24	8-19	545	200
125	200	250	210	184	26	8-19	625	250
150	210	285	240	211	26	8-23	750	280
200	230	340	295	266	26	8-23	980	300
250	250	395	350	319	28	12-23	1130	360
300	270	445	400	370	28	12-23	1330	400
350	290	505	460	429	30	16-23	1533	450
400	310	565	515	480	32	16-28	1905	450
450	330	615	565	530	32	20-28	2072	640
500	350	670	620	562	34	20-28	2302	640
600	390	780	725	682	36	20-31	2650	900

Socket Ends Non-rising Stem Resilient Seated Gate Valve

Technical Data

Size	DN50-DN300
General Design	DIN 3352/SABS 664
Face to Face	DIN 3202 F5/SABS 664
Inspection and Test	ISO 5208

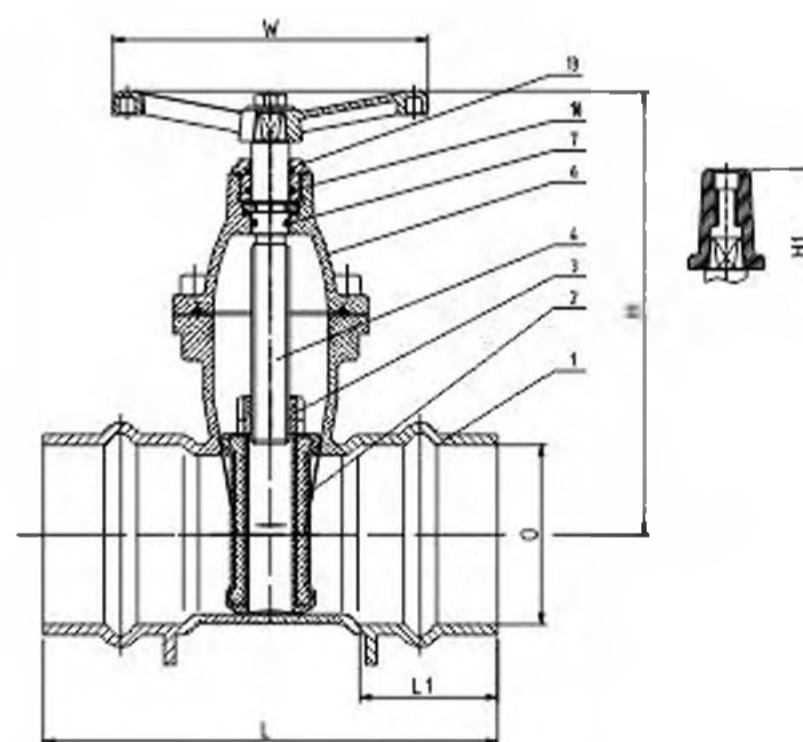
Product Features

- Bolt bonnet
- Replaceable O-ring
- Low torque operation
- Rubber encapsulated wedge
- Clockwise closing direction
- Fusion bonded epoxy coated inside and outside



Materials of Parts

Parts	Description	Material
1	Body	GGG50
2	Wedge	GGG50+EPDM/NBR
3	Wedge Nut	Brass
4	Stem	Stainless Steel
6	Bonnet	GGG50
7	Back Sealing O-ring	EPDM/NBR
10	O-ring	EPDM/NBR
13	Stuffing Nut	Brass
15	Gland Flange	GGG50



Optional Extras

- Stem cap
- Position Indicator
- Extension spindle/T key

Dimensions(mm)

Size(DN)	PPE DA O	L		L1	H	H1	W	W.T(kg)	
		F5	SABS					F5	SABS
50	63	250	335	77	300	340	180	7.15	9.5
65	75	270	335	80	310	350	180	8.25	10.5
80	90	280	335	84	350	390	200	12.65	15
100	110	300	355	88	380	420	220	18.7	21
125	125	325	375	91	420	460	220	23.1	27.5
125	140	325	375	91	420	460	220	24.2	28
150	160	350	405	94	470	510	250	33	38
200	200	400	450	100	590	630	280	45.1	50
200	225	400	450	100	590	630	280	47.3	55
250	250	450	450	125	680	720	320	67.1	67.1
300	315	500	500	140	790	830	360	92.4	92.4

↔ DIN Globe Valve

Technical Data

Size	DN10-DN300
General Design	DIN 3356
Face to Face	DIN 3202 F1
Flange Drilling	DIN 2533 PN 16
Inspection and Test	ISO 5208

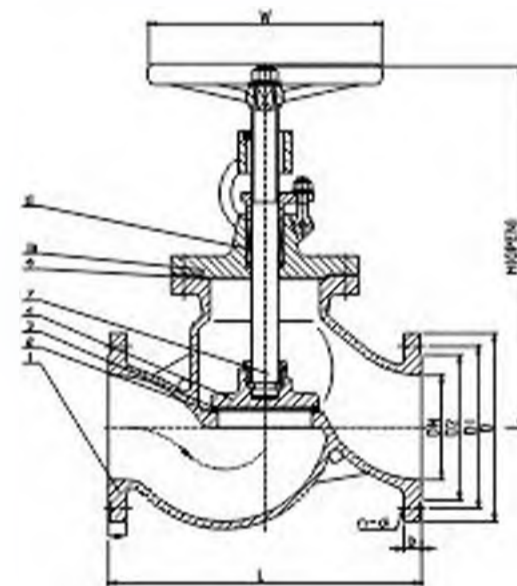


Product Features

- Bolt bonnet
- Clockwise closing direction
- Graphite packing
- Seat rings are pressed into body

Materials of Parts

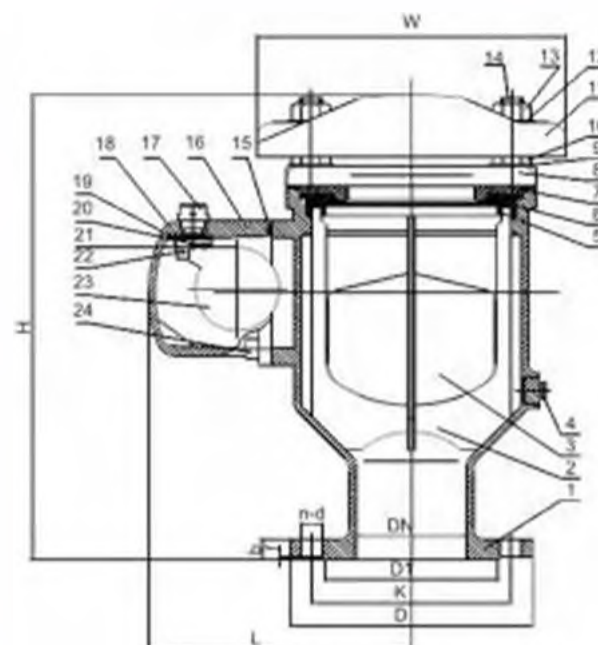
Parts	Description	Material
1	Body	GG25
2	Seat Ring	Stainless Steel/Brass
3	Disc-ring	Stainless Steel/Brass
4	Disc	GG25/Carbon Steel
7	Stem	Stainless Steel
9	Bonnet Gasket	Graphite with soft Steel
10	Bonnet	GG25
11	Packing	Graphite



Dimensions(mm)

Size(DN)	L	D	D1	D2	b	n-d	H(open)	W
15	130	95	65	45	14	4 14	200	120
20	150	105	75	58	16	4 14	220	120
25	160	115	85	68	16	4 14	225	120
32	180	140	100	78	18	4 18	250	120
40	200	150	110	88	18	4 18	270	160
50	230	165	125	102	20	4 18	290	200
65	290	185	145	122	20	4 18	320	200
80	310	200	160	138	22	8 18	365	200
100	350	220	180	158	24	8 18	410	240
125	400	250	210	188	26	8 18	460	240
150	480	285	240	212	26	8 22	525	280
200	600	340	295	268	30	12 22	685	360
250	730	405	355	320	32	12 26	830	400
300	850	460	410	378	32	12 26	925	450

↔ Ductile Iron Air Release Valve, Double Orifice



- *Working pressure: 16kg/cm²
- *Shell test pressure: 24kg/cm²
- *Seal test pressure: 18kg/cm²
- *Media: Water, neutral oil
- *Working temperature: 0.6–52 °C
- *External and internal coating: 100% fusion-bonded epoxy
- *Flange drilled according to EN1092 PN10, PN16

DIMENSION:MM

DN	L	H	D	K	D1	n-d	b	f	W	WEIGHT(KG)
50	227	319	165	125	98	4-19	19	3	206	23
65	227	319	185	145	118	4-19	19	3	206	24
80	227	319	200	160	132	8-19	19	3	206	25
100	238	413	200	180	156	8-19	19	3	280	42
150	238	413	285	240	211	8-23	19	3	280	44

NO	Part	Material	Standard			
			US	BS	DIN	EN
1	Body	Ductile iron		BS2789 500-7	DIN1693 GGG50	En1593 GJS500
2	Float guide	ABS				
3	Float	ABS				
4	Drain plug	Stainless steel		BS970 304S 15		
5	Support	ABS				
6	Seat ring	EPDM		BS2494		EN681.1
7	Seat support	ABS				
8	Cover	Ductile iron		BS2789 500-7	DIN1693 GGG50	En1563 GJS500
9	Washer	Zinc-plated steel		BS4190		
10	Nut	Zinc-plated steel		BS4190		
11	Cow	Ductile iron		BS2789 500-7	DIN1693 GGG50	En1563 GJS500
12	Washer	Zinc-plated steel		BS4190		
13	Nut	Zinc-plated steel		BS4190		
14	BOLT	Zinc-plated steel		BS4190		
15	O-ring	EPDM		BS2494		EN681.1
16	Side body	Ductile iron		BS2789 500-7	DIN1693 GGG50	En1563 GJS500
17	Cap	Nylon				
18	Gasket	EPDM		BS2494		EN681.1
19	Bracket	Nylon				
20	Screw	Stainless steel		BS970 304S 15		
21	Seat	EPDM		BS2494		EN681.1
22	Hinge pin	Stainless steel		BS970 304S 15		
23	Side float	ABS				
24	Stud	Zinc-plated steel		BS4190		

Y Strainer

Technical Data

Size	DN15–DN500
Face to Face	DIN 3202 F1
Flange Drilling	EN1092-2 PN16
Inspection and Test	ISO5208

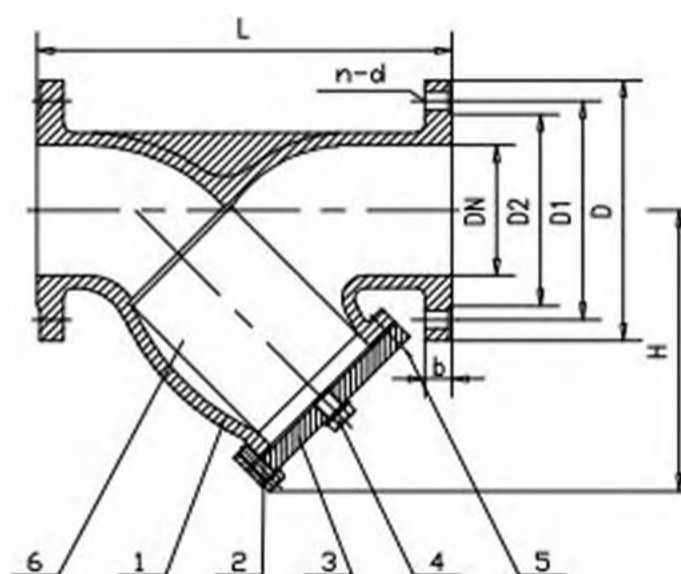


Product Features

- Y-pattern
- Stainless steel screen
- Bolted cover
- Flanged ends
- FBE coated

Materials of Parts

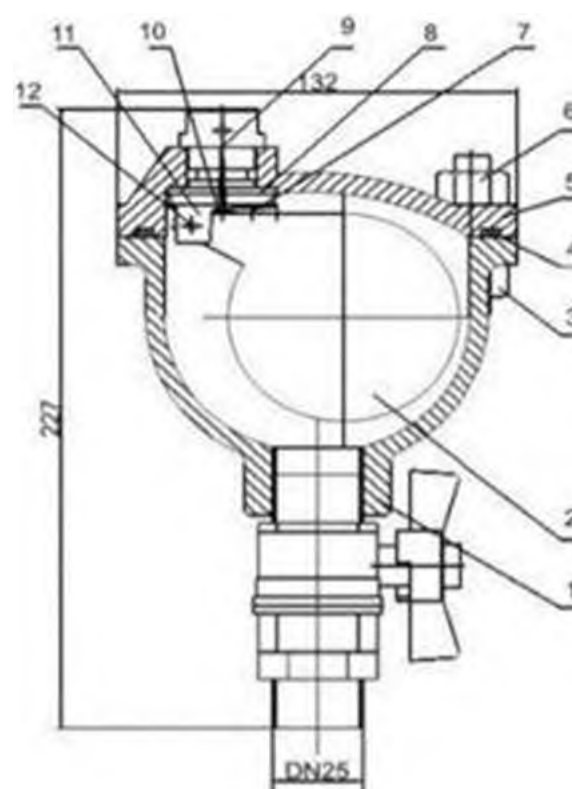
Parts	Description	Material
1	Body	GG25/GGG50
2	Cover Gasket	Graphite with Soft Steel/ EPDM/NBR
3	Cover	GG25/GGG50
4	Plug	Zinc Steel BSPT
5	Bolt & Nut	Galvanized Flat Head Bolt /Galvanized Stud Bolt/ Stainless Steel
6	Screen	SS Wire Screen/SS Perforated Mesh



Dimensions(mm)

Size(DN)	L	D	D1	D2	b	n-d	H	Plug
15	130	95	65	46	14	4-14	74	1/4"
20	150	105	75	56	16	4-14	85	1/4"
25	160	115	85	65	16	4-14	95	1/4"
32	180	140	100	76	18	4-19	100	1/4"
40	200	150	110	84	18	4-19	120	1/2"
50	230	165	125	99	20	4-19	135	1/2"
65	290	185	145	118	20	4-19	185	1/2"
80	310	200	160	132	22	8-19	200	1/2"
100	350	220	180	156	24	8-19	235	1/2"
125	400	260	210	184	26	8-18	285	3/4"
150	480	285	240	211	26	8-23	300	3/4"
200	600	340	296	266	30	12-23	385	3/4"
250	730	405	355	319	32	12-28	458	1"
300	850	460	410	370	32	12-28	510	1"
350	980	520	470	429	36	16-28	650	2"
400	1100	580	525	480	38	16-31	740	2"
450	1200	640	585	548	40	20-31	830	2"
500	1250	715	650	509	42	20-34	910	2"

↔ Ductile Iron Air Release Valve, Single Orifice



- *Working pressure: 16kg/cm²
- *Shell test pressure: 24kg/cm²
- *Seat test pressure: 18kg/cm²
- *Media: Water,

- *Working temperature: 0.6–52°C
- *External and internal coating: 100% fusion-bonded epoxy

MATERIAL FOR MAIN PARTS

NO	Part	Material	Standard			
			US	BS	DIN	EN
1	Body	Ductile iron		BS2879 500-7	DIN1693 GGG50	
2	Float guide	ABS				
3	BOLT	Zinc-plated steel		BS4190		
4	O-ring	EPDM		BS2494		
5	Cover	Ductile iron		BS2879 500-7	DIN1693 GGG50	EN1563 GJS500
6	Nut	Zinc-plated steel		BS4190		
7	Seat	EPDM		BS2494		
8	Gasket	EPDM		BS2491		
9	Cap	Nylon				
10	Screw	Stainless steel		BS970 304S 15		
11	Gracket	Nylon				
12	Hinge pin	Stainless steel		BS970 304S 15		

↔ Dismantling Joint

Nominal Diameter	Dn50 to DN3000
Nominal Pressure	PN2.5-40
Flange Connection	EN1092, ANSI B16.5
Inspection and Test	EN12266-1/API 598

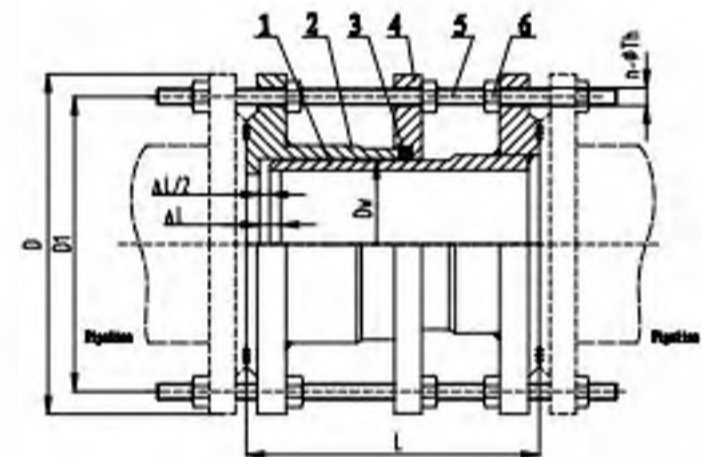
Material List:

- Compensate for differences in flange to flange distance
- Simplify the installation of pipelines
- Reduce assembling time
- Dismantle for service, inspection and maintenance
- Epoxy powder coating and bolting made of steel
- Drinking water approved



Material List:

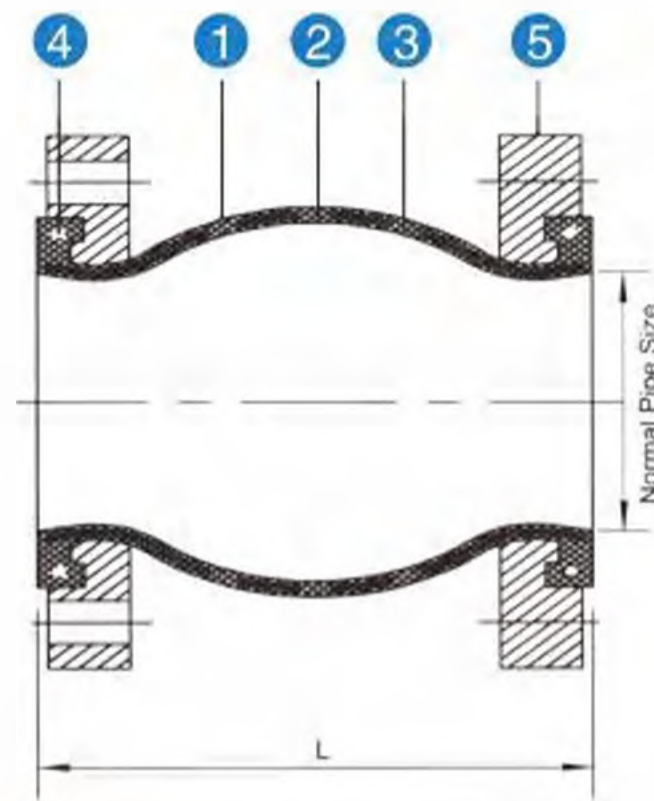
No	Item	Material
1	Long Piece	DI/CI/CS/SS
2	Short Piece	DI/CI/CS/SS
3	Sealing	EPDM
4	Gland	DI/CI/CS/SS
5	Stud	CS/SS
6	Nut	CS/SS



Dimensions(mm)

Size				ΔL	PN2.5			PN6			PN10			PN16			ANSI B16.5			PN25		
DN		DW	L		D	D1	n-φTh	D	D1	n-φTh	D	D1	n-φTh	D	D1	n-φTh	D	D1	n-φTh	D	D1	n-φTh
mm	(inch)																					
50	2"	59	200	40	140	110	4-16	140	110	4-16	185	125	4-19	185	125	4-19	152.4	120.6	4-19	185	125	4-19
65	2.5"	76			160	130	4-16	160	130	4-16	185	145	4-19	185	145	4-19	177.8	139.7	4-19	185	145	8-19
80	3"	89			190	150	4-19	190	150	4-19	200	160	8-19	200	160	8-19	190.5	162.4	4-19	200	160	8-19
100	4"	108			210	170	4-19	210	170	4-19	220	180	8-19	220	180	8-19	288.6	190.5	8-19	235	190	8-23
125	5"	133			240	200	8-19	240	200	8-19	250	210	8-19	250	210	8-19	254	215.9	8-22.4	270	220	8-28
150	6"	159			255	225	8-19	255	225	8-19	285	240	8-23	285	240	8-23	279.4	241.3	8-22.4	300	250	8-28
200	8"	219			320	280	8-19	320	280	8-19	340	295	8-23	340	295	12-23	342.9	298.4	8-22.4	380	310	12-28
250	10"	273			375	335	12-19	375	335	12-19	395	350	12-23	405	355	12-28	406.4	361.9	12-25.4	425	370	12-31
300	12"	325	220	50	440	395	12-23	440	395	12-23	445	400	12-23	460	410	12-28	482.6	431.8	12-25.4	485	430	16-31
350	14"	377			490	445	12-23	490	445	12-23	505	460	16-23	520	470	16-28	533.4	478.2	12-28.4	555	490	16-34
400	16"	426			540	495	16-23	540	495	16-23	565	515	16-28	580	525	16-31	596.9	539.7	16-28.4	620	550	16-37
450	18"	480			595	550	16-23	595	550	16-23	615	565	20-28	640	585	20-31	635	577.8	16-31.8	670	600	20-37
500	20"	530	240	60	645	600	20-23	645	600	20-23	670	620	20-28	715	650	20-34	698.5	635	20-31.8	730	660	20-37
600	24"	630			755	705	20-28	755	705	20-28	780	725	20-31	840	770	20-37	812.8	749.3	20-35.1	845	770	20-40
700	28"	720	350	80	880	810	24-28	880	810	24-28	895	840	24-31	910	840	24-37	927.1	863.6	28-35.1	960	875	24-43
800	32"	820			975	920	24-31	975	920	24-31	1015	950	24-34	1025	950	24-40	1060.45	977.9	28-41.1	1085	990	24-49
900	36"	920			1075	1020	24-31	1075	1020	24-31	1115	1050	28-34	1125	1050	28-40	1168.4	1085.8	32-41.1	1185	1090	28-49
1000	40"	1020	370	90	1175	1120	28-31	1175	1120	28-31	1230	1160	28-37	1255	1170	28-43	-	-	-	1320	1210	28-56
1200	48"	1220			1375	1320	32-31	1405	1340	32-34	1455	1380	32-40	1485	1390	32-49	1511.3	1422.4	44-41.1	1530	1420	32-56
1400	56"	1420	380	100	1575	1520	36-31	1630	1560	36-37	1675	1590	36-43	1685	1590	36-49	-	-	-	1755	1640	36-62
1600	64"	1620			1790	1730	40-31	1830	1760	40-37	1915	1820	40-49	1930	1820	40-56	-	-	-	1975	1860	40-62
1800	72"	1820	400	110	1990	1930	44-31	2045	1970	44-40	2115	2020	44-49	2130	2020	44-56	2197.1	2095.6	60-50.8	2195	2070	44-70
2000	80"	2020			2190	2130	48-31	2265	2180	48-43	2325	2230	48-49	2345	2230	48-62	-	-	-	2425	2300	48-70
2200	88"	2220			2405	2340	52-34	2475	2390	52-42	2550	2440	52-56	2555	2440	52-62	-	-	-	-	-	-

Flexible Rubble Joint



Material List:

No	Item	Material
1	Cover	EPDM
2	Reinforcing Fabric	Nylon
3	Tube	EPDM
4	Retain Rings	Steel
5	Flange	Carbon Steel

Nominal Diameter	Dn15 to DN2000
Nominal Pressure	PN10-25
FTF Dimension	ISO5752/EN558-1
Flange Connection	EN1092, ANSI B16.5
Inspection and Test	EN12266-1/API 598

Structure and Feature:

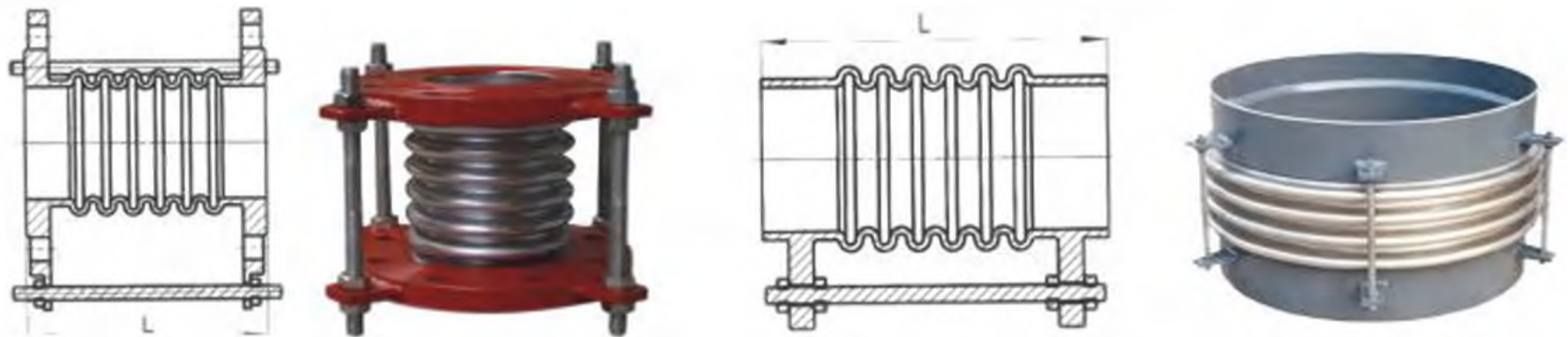
1. Minimal axial dimensions
2. Limited weight
3. Low warping forces
4. High-resistance to work
5. High-capacity acoustic damping

Dimensions(mm)

Nominal Diameter DN		Length L(mm)		NO. of bolt n	GB		Axial disp -lacement (mm)		Lateral displa -cement (mm)	Angle of defl -ection (°)
(mm)	(in)				Diameter of bolt hole outer circle Do(mm)	Diameter of bolt hole inner circle Di(mm)	Stretch	Comp -ression		
32	1 1/4	95		4	17.5	100	6	9	9	15°
40	1 1/2	95		4	17.5	110	6	10	9	15°
50	2	105		4	17.5	125	7	10	10	15°
65	2 1/2	115		4	17.5	145	7	13	11	15°
80	3	135	130	8	17.5	160	8	15	12	15°
100	4	150	135	8	17.5	180	10	19	13	15°
125	5	165	160	8	17.5	210	12	19	14	15°
150	6	180	185	8	22	240	12	20	22	15°
200	8	190	200	8	22	295	16	25	22	15°
250	10	230	240	12	22	350	16	25	22	15°
300	12	245	260	12	22	400	16	25	22	15°
350	14	265		16	26	460	16	25	22	15°
400	16	285		16	26	515	16	25	22	15°
450	18	285		20	26	565	16	25	22	15°
500	20	265		20	30	620	16	25	22	15°
600	24	265		20	26	725	16	25	22	15°
700	18	260		24	30	810	16	25	22	10°
800	32	260		24	30	920	16	25	22	10°
900	36	260		24	30	1020	16	25	22	10°
1000	40	260		28	30	1120	16	25	22	10°

Nominal Diameter DN		Length L(mm)		b	NO of bolt n	ANSI 150		Axial disp -lacement (mm)		Lateral displa -cement (mm)	Angle of defl -ection (°)
(mm)	(in)					Diameter of bolt hole outer circle Do(mm)	Diameter of bolt hole inner circle Di(mm)	Stretch	Comp -ression		
25	1	152	130	14	4	16	79.4	+9.5	-13	± 13	± 15°
32	1 1/4	152	130	16	4	16	89	+9.5	-13	± 13	± 15°
40	1 1/2	152	130	16	4	16	98.5	+9.5	-13	± 13	± 15°
50	2	152	130	16	4	19	121	+9.5	-13	± 13	± 15°
65	2 1/2	152	130	18	4	19	139.5	+9.5	-13	± 13	± 15°
80	3	152	130	18	4	19	153	+9.5	-13	± 13	± 15°
100	4	152	130	18	8	19	190	+9.5	-16	± 13	± 15°
125	5	152	130	20	8	22.5	216	+9.5	-16	± 13	± 15°
150	6	152	130	22	8	22.5	242	+9.5	-16	± 13	± 15°
200	8	152	130	22	8	22.5	298	+9.5	-16	± 13	± 15°
250	10	203	130	24	12	25.5	362	+13	-16	± 19	± 15°
300	12	203	130	24	12	25.5	432	+13	-19	± 19	± 15°
350	14	203	200	26	12	28.5	476	+13	-19	± 19	± 15°
400	16	203	200	28	16	28.5	540	+13	-19	± 19	± 15°
450	18	203	200	30	16	32	578	+13	-19	± 19	± 15°
500	20	203	200	30	20	32	634	+13	-19	± 19	± 15°
600	24	254	260	32	20	35	749.5	+13	-19	± 19	± 15°
800	32	254	260	36	24	30	920	+13	-19	± 19	± 15°

↔ Metallic Expansion Joint



Nominal Diameter	DN32 to DN300
Nominal Pressure	PN10-25
Flange Connection	EN1092, ANSI B16.5
Inspection and Test	EN12266-1/API 598

Features:

- Extremely flexible
- Extremely durable
- Lasts the life of mechanical system
- Handles greater offsets without a compromise of hose integrity
- Good for critical applications where maintenance and replacement would be costly
- Good for cold water, hot water and steam applications
- Available in a variety of end fittings
- Stainless steel end fittings standard
- No gaskets

Material:

Bellow Material	SS304, SS316, SS316L
Flange	WCB, SS304, SS316, SS316L

Dimensions(mm)

Nominal Diameter DN	Ripple Qty.	Working Pressure(bar)						Effective area (cm ²)	Max. Outside Diameter (mm)	Supplied Length(mm)					
		10			16					10		16		25	
		Axial Compensation(mm)			Force for Compress(N/mm)					Flanged End		Welded End			
32	16	41	36	31	14	32	47	16	225	224	291	316	321		
40	16	41	36	31	22	45	55	23	244	230	304	319	334		
50	16	41	36	31	35	35	70	37	259	240	342	347	372		
65	12	38	34	29	32	40	50	55	270	260	334	340	362		
80	10	49	43	38	21	26	33	81	284	270	368	374	390		
100	10	64	57	49	40	50	63	121	304	305	381	387	409		
125	9	66	58	50	36	45	56	180	334	382	386	388	414		
150	8	64	54	46	51	59	65	257	364	356	399	402	427		
200	6	59	53	48	52	58	78	479	442	340	402	402	426		
250	6	87	79	71	35	39	47	769	507	393	459	493	399		
300	6	87	79	71	37	41	45	1105	562	464	525	564	565		

↔ Other Type Flexible Rubber Joint



По вопросам продаж и поддержки обращайтесь:

Алматы (7273)495-231	Казань (843)206-01-48	Новокузнецк (3843)20-46-81	Смоленск (4812)29-41-54
Архангельск (8182)63-90-72	Калининград (4012)72-03-81	Новосибирск (383)227-86-73	Сочи (862)225-72-31
Астрахань (8512)99-46-04	Калуга (4842)92-23-67	Омск (3812)21-46-40	Ставрополь (8652)20-65-13
Барнаул (3852)73-04-60	Кемерово (3842)65-04-62	Орел (4862)44-53-42	Сургут (3462)77-98-35
Белгород (4722)40-23-64	Киров (8332)68-02-04	Оренбург (3532)37-68-04	Тверь (4822)63-31-35
Брянск (4832)59-03-52	Краснодар (861)203-40-90	Пенза (8412)22-31-16	Томск (3822)98-41-53
Владивосток (423)249-28-31	Красноярск (391)204-63-61	Пермь (342)205-81-47	Тула (4872)74-02-29
Волгоград (844)278-03-48	Курск (4712)77-13-04	Ростов-на-Дону (863)308-18-15	Тюмень (3452)66-21-18
Вологда (8172)26-41-59	Липецк (4742)52-20-81	Рязань (4912)46-61-64	Ульяновск (8422)24-23-59
Воронеж (473)204-51-73	Магнитогорск (3519)55-03-13	Самара (846)206-03-16	Уфа (347)229-48-12
Екатеринбург (343)384-55-89	Москва (495)268-04-70	Санкт-Петербург (812)309-46-40	Хабаровск (4212)92-98-04
Иваново (4932)77-34-06	Мурманск (8152)59-64-93	Саратов (845)249-38-78	Челябинск (351)202-03-61
Ижевск (3412)26-03-58	Набережные Челны (8552)20-53-41	Севастополь (8692)22-31-93	Череповец (8202)49-02-64
Иркутск (395)279-98-46	Нижний Новгород (831)429-08-12	Симферополь (3652)67-13-56	Ярославль (4852)69-52-93
Россия (495)268-04-70	Киргизия (996)312-96-26-47	Казахстан (7172)727-132	